

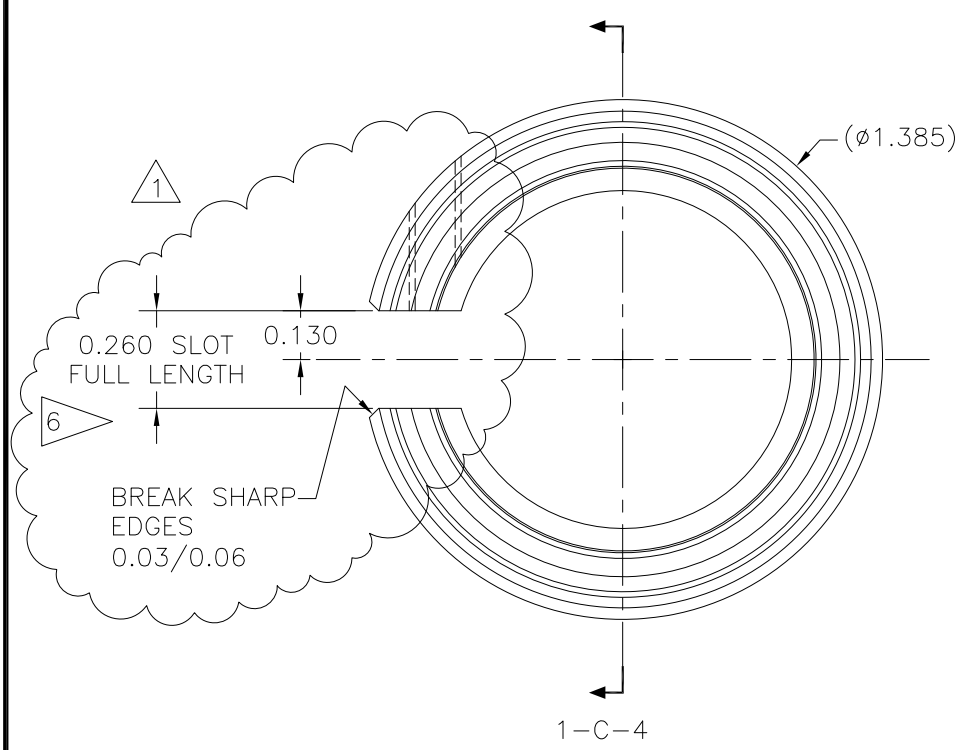
NOTES:

- 1. MATERIAL: NAVAL BRASS (ALLOY 464)
- 2. HEAT TREAT: H02 (1/2 HARD) TEMPER
- 3. SURFACE TREATMENT: NONE
- 4. 1.225-20-2B  
60° V-THREAD  
INTERNAL CLASS 2B  
MAJOR DIA. = 1.237/1.157  
MATING PART IS MALE LOCKING SLEEVE, ERS-032.  
ENSURE THAT MATING THREADS MAKE UP SMOOTHLY  
USING MATING PART AS "THREAD GAGE".
- 5. WEIGHT: 0.24 LBS.

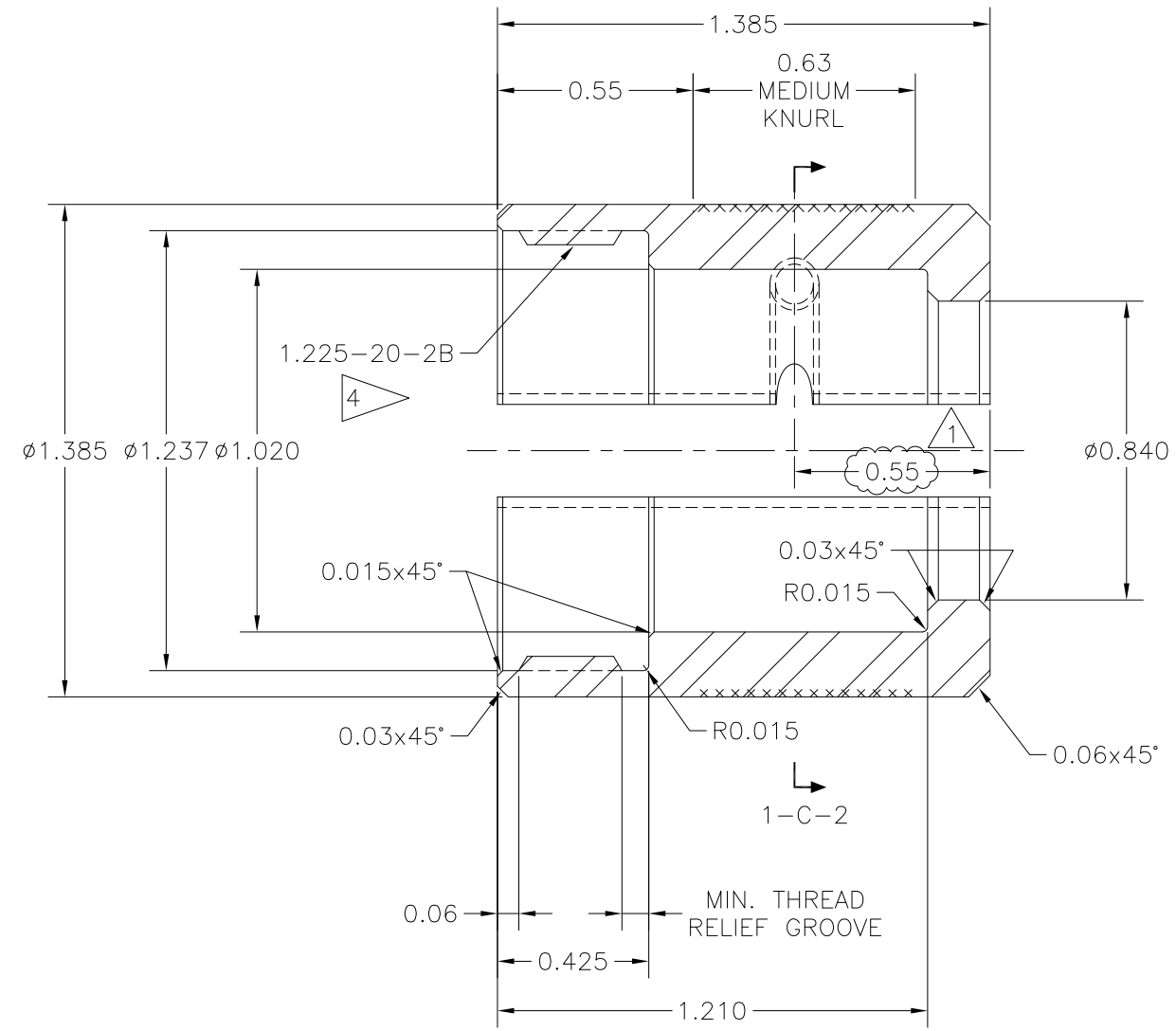


SLOT FULL LENGTH OF PART. CHECK THREAD MATING WITH ERS-022 AFTER SLOTTING AND DRESS THREADS IF NECESSARY FOR PROPER THREAD ENGAGEMENT. IF RESIDUAL STRESSES CAUSE OUT-OF-ROUNDNESS A #6-32UNC x 1/2" LG. STAINLESS SET SCREW MAY BE INSERTED AND LEFT IN PLACE TO FORCE SLOTTED NUT BACK TO CIRCULAR FORM TO ASSIST THREADING.

REVISIONS				
NO	DESCRIPTION	DATE	BY	APR/DATE
0	ISSUED FOR MANUFACTURE	2/21/11		
1	ADDED SLOT ENTIRE LENGTH OF PART, D&T FOR #6-32UNC & NOTE 7	4/7/11		

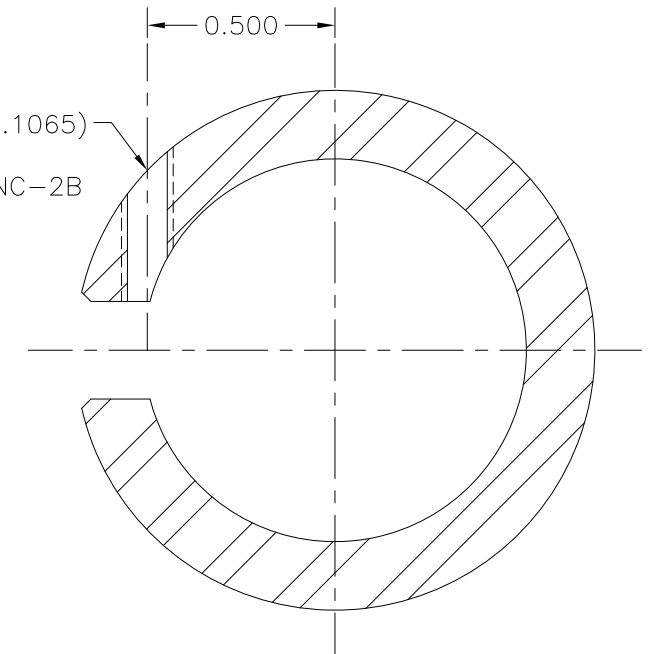


END VIEW 1-C-7  
FEMALE LOCKING SLEEVE

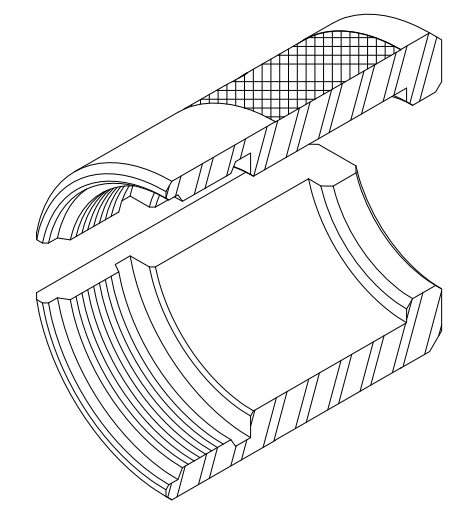


SECTION 1-C-4  
1-B-7

DRILL #36 (0.1065)  
TO SLOT  
TAP #6-32UNC-2B  
TO SLOT



SECTION 1-C-2  
1-B-4



PICTORIAL 1-B-2  
FEMALE LOCKING SLEEVE  
N.T.S.

TOLERANCES: UNLESS OTHERWISE SPECIFIED 0.X ± 0.030 0.XX ± 0.010 0.XXX ± 0.005 ANGLES ± 1/2° BREAK EDGES 0.015 x 45° MIN. FINISH 125 ✓ [0.010] A ALL DIMS ARE IN INCHES, UNLESS NOTED OTHERWISE.	PROPRIETARY NOTICE THIS DRAWING AND THE INFORMATION IT CONTAINS ARE CONSIDERED CONFIDENTIAL, AND MAY NOT BE REPRODUCED, COPIED OR USED, IN PART OR IN WHOLE, WITHOUT PRIOR WRITTEN CONSENT.	<b>Integrated Ocean Drilling Program</b> TEXAS A&M UNIVERSITY 1000 DISCOVERY DRIVE COLLEGE STATION, TX 77845	
		SHEET 1 OF 1 SCALE 4:1 BY MM DATE 2/21/11	TITLE FEMALE LOCKING SLEEVE SYSTEM ERS v.2 APPROVED DH CHECKED DH